

Product Information

AccuBand™ 100 bp DNA Marker II, Ready to Use

DM2000 **45.5 µg / 500 µl**
Size: 500 µl
 5 µl per well for 100 gel applications

Storage

Room temperature for 6 months
 4°C for 12 months
 -20°C for 36 months

Features:

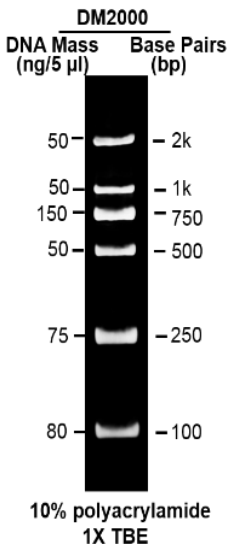
1. Fast sizing for routine PCR products
2. Fast separation in short distance (10-20 mm)
3. Stable at room temperature for 6 months
4. It is suitable for agarose and polyacrylamide gel.

Description

AccuBand™ 100 bp DNA marker II is composed of 6 individual DNA fragments, presenting 2k, 1k, **750**, 500, 250 and 100 bp sharp bands respectively. This product contains 1 enhanced band (750 bp) for easy band identification. AccuBand™ 100 bp DNA marker II is ready-to-use, containing loading buffer with dual color tracking dyes (orange G and Xylene cyanol FF). To improve the faint visibility of low molecular weight bands frequently occurred in use of conventional DNA markers, AccuBand™ 100 bp DNA marker II provides a sufficient amount of DNA for 250 and 100 bp fragments, and thus ensuring clear observation of all DNA bands ranging from 100 bp to 2 kb, either in agarose gel or in polyacrylamide gel electrophoresis.

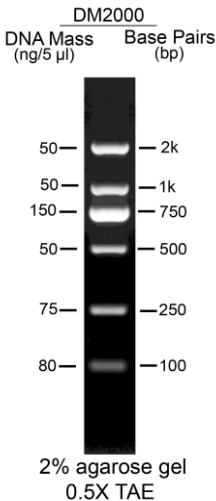
Buffering

10 mM Tris-HCl (pH 8.0), 10 mM Na-EDTA,
0.025% Orange G, 0.005% Xylene cyanol FF
and 10% Glycerol.



Note: This DNA Ladder was not designed for precise quantification of DNA mass, but can be used for approximating the mass of DNA by intensity comparison.

AccuBand™ 100 bp DNA marker II



The ladder is supplied with the gel loading buffer and is ready to use. Do not heat or dilute before loading.

Quality Control

1. 6 defined bands are observed during electrophoresis in agarose gel.
2. No nuclease activity is detected by a direct nuclease activity assay.

Other information

SMOBIO Technology, Inc. claims all warranties with respect to this document, expressed or implied, including but not limited to those of merchantability or fitness for a particular purpose. In no event shall SMOBIO Technology, Inc. be liable, whether in contract, tort, warranty, or under any statute or any other basis for special, incidental, indirect, punitive, multiple or consequential damages in connection with or arising from this document, including but not limited to the use thereof.

Caution: Not intended for human or animal diagnostic or therapeutic uses.

Related Products

DM1200	AccuBand 50 bp DNA Ladder II, 500 µl
DM2200	AccuBand 100 bp DNA Ladder II, 500 µl
DM3100	ExcelBand 1 KB (0.25-10 kb) DNA Ladder, 500 µl
DM4100	ExcelBand XL 25 kb DNA Ladder, Broad Range (up to 25 kb), 500 µl
PM2610	ExcelBand Enhanced 3-color High Range Protein Marker, 250 µl × 2
PM2800	ExcelBand 3-color Extra Range Protein Marker, 250 µl × 2
WM1000	YesBlot Western Marker I, 250 µl
TP1000	ExcelTaq DNA Polymerase, 500 U
TP1200	ExcelTaq 5× PCR Master Dye Mix, 200 RXN
TF1000	SMO-HiFi DNA Polymerase, 100 U
RP1000	ExcelRT Reverse Transcriptase, 20,000 U
DL5000	FluoroDye DNA Fluorescent Loading Dye (Green, 6X), 1 ml
DS1000	FluoroStain DNA Fluorescent Staining Dye (Green, 10,000X), 500 µl
NS1000	FluoroVue Nucleic Acid Gel Stain (10,000X), 500 µl
CK1000	Champion E. coli Transformation Kit
CV1100	GetClone PCR Cloning Vector II, 20 RXN
VE0100	B-BOX™ Blue Light LED epi-illuminator



B-BOX™ Blue Light LED epi-illuminator

For research use only
2019 ver. 2.1.1

P06-F11-A1